

# P1G



## TABELLA DI PERFORMANCE PERFORMANCES TABLE

P1G		100	110	130	150	175	200	220	250	300
Displacement / Cilindrata	cm <sup>3</sup> /rev	99	115	129	154	172	201	221	243	290
Bore / Alesaggio	mm	28	35	37	35	37	40	42	44	48
Stroke / Corsa	mm	32	24	24	32	32	32	32	32	32
Specific torque / Coppia spec.	Nm/bar	1,58	1,83	2,05	2,45	2,74	3,20	3,50	3,87	4,62
Cont. Pressure / Press. Cont.	bar	250	250	250	250	250	250	250	250	250
Peak pressure / Press. Picco	bar	425	425	400	400	375	350	350	350	300
Cont. speed / Velocità Cont.	rpm	550	550	550	550	550	550	550	450	350
Max. speed / Velocità Max	rpm	1000	1000	1000	1000	900	800	700	700	650
Peak power / Potenza picco	kW	48	48	48	48	48	48	48	48	48

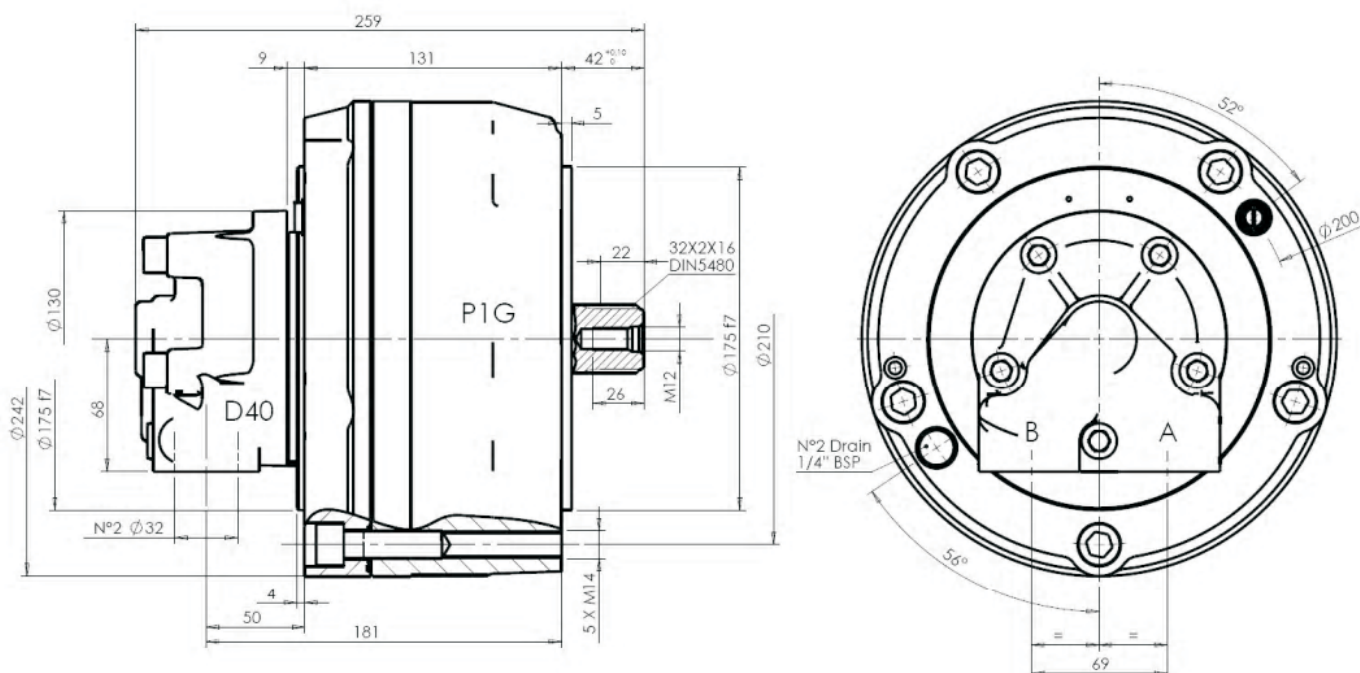
Approximative mass / Massa approssimativa	kg	30
---	----	----

Motor casing oil capacity / Capacità olio corpo motore	l	1
--	---	---

Max casing pressure / Pressione max. in carcassa	bar	5	peak picco	La pressione continua o media di lavoro va determinata in funzione della vita del motore (vita dei cuscinetti).
		1	continuous continuo	Continuous or average working pressure should be chosen in function of the required service lifetime (bearing lifetime).

Available also with aluminum case

### DIMENSIONI D'INGOMBRO DIMENSIONAL DRAWING



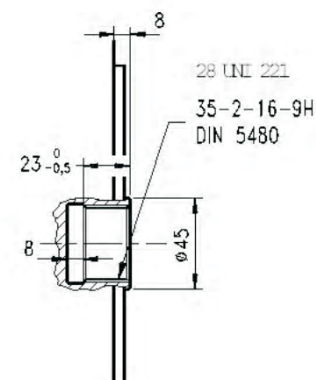
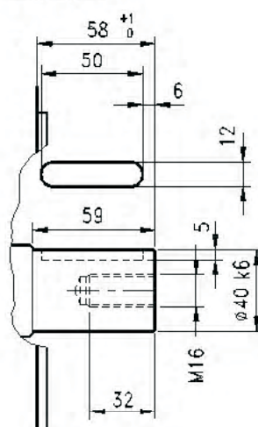
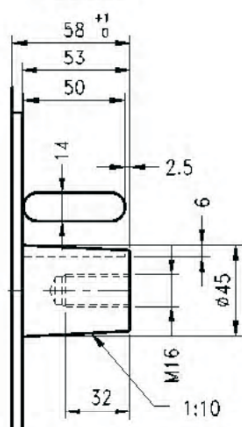
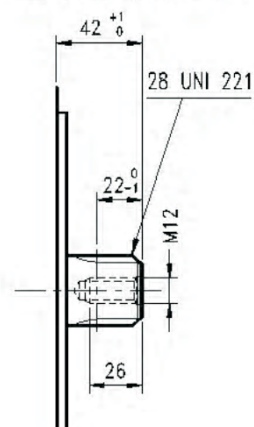
#### SHAFTS

Splined DIN 5480 7  
Calettato UNI 221 1

Tapered 2  
Conico

Cylindrical 8  
Cilindrico

Internal spline DIN 5480 9  
Calett. intern. UNI 221 3



#### ALBERI

#### SPLINE DATA - CALETTATURE

35-2-16 DIN 5480	
d0	Ø32.0
d1	Ø35.0 <sup>+0.520</sup> / <sub>+0</sub> H14
d2	Ø31.0 <sup>+0.160</sup> / <sub>+0</sub> H11
A	Ø3.5
da	Ø27.711 H11
d3	Ø34.6 <sup>-0</sup> / <sub>-0.160</sub> h11
d4	Ø30.6 <sup>-0</sup> / <sub>-0.520</sub> h14
B	Ø4.0
db	Ø39.000 f8

28 UNI 221 (6-28-34 DIN 5463)	
d1	Ø28.0 <sup>+0.021</sup> / <sub>+0</sub> H7
d2	Ø34.1 <sup>+0.160</sup> / <sub>+0</sub> H11
A	7.0 <sup>+0.028</sup> / <sub>+0.013</sub> F7
d3	Ø28.0 <sup>-0.007</sup> / <sub>-0.020</sub> g6
d4	Ø34.0 <sup>-0.065</sup> / <sub>-0.160</sub> h14
B	7.0 <sup>-0.013</sup> / <sub>-0.028</sub> f7

#### ADAPTORS MANICOTTI

